



Cancer Care
Associates

Cancer Care Manning-Great Lakes

Kick Off Briefing

PPSHCC-163, DA 2022/1362

Applicant:	Cancer Care Associates
Planner:	Think Planners
Architect:	Team 2
Project Manager:	Essence Project Management



Agenda

1. Introductions
2. Applicant introduction
 - Proposal Introduction
 - Summary of Development and Plan Overview
 - Service Utilisation
 - Reports and Pre-DA and community consultation
3. Council high level overview of proposal
4. Preliminary key issues for Public Exhibition and Council Assessment
5. Next steps

Proposal Introduction

The Australian owned Cancer Care Associates has a proven track record of providing high quality medical oncology, haematology, radiation oncology and associated specialist services, including pharmacy and clinical trials.

Cancer Care Manning-Great Lakes proposes to provide this regional community with access to state-of-the-art facilities and therapy treatments, allowing our patients and tumour groups access to the latest Medical Oncology, Haematology and Radiation Therapy treatment techniques. Our 'no wait for care' policy is the cornerstone of our service, ensuring all therapies are delivered without joining a waiting list.

The establishment of radiotherapy services in Taree means patients will no longer need to travel for treatment, relieving the treatment burden on surrounding health services. The Commonwealth has identified Manning-Great Lakes as an area of need, with Cancer Care Associates successfully securing a Federal funding via the Fighting Cancer Grant to assist in the establishment of this service.

Cancer Care Associates has a proud history of ensuring all patients can access care irrespective of their financial situation. The proposed model of care at this facility will be a no-gap service.



Summary of Development

Centre Design

Radiation Oncology Bunkers	1
Medical Oncology Treatment Bed/Chair	6
CT (diagnostic)	1
Pharmacy / Dispensary	1
Consultation / Interview rooms	3
On site parking spaces	6
Patient Drop off / Ambulance bay	1

Hours of Operation

Monday to Friday

7.30 am to 5.00 pm

Saturday

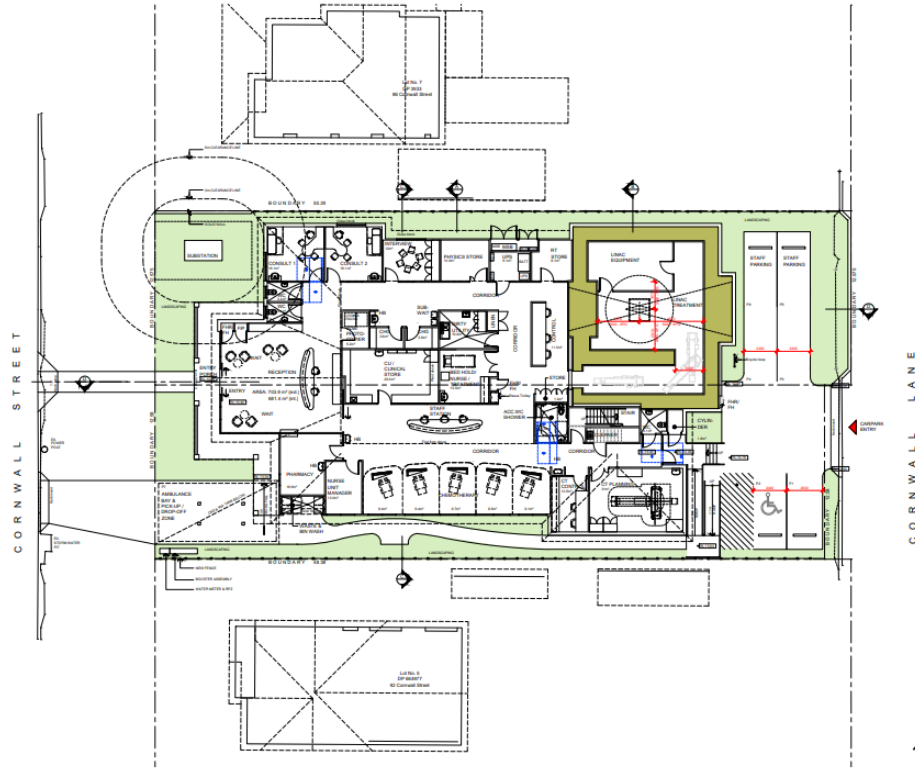
9.00 am to 5.00 pm *Emergency Treatments only*



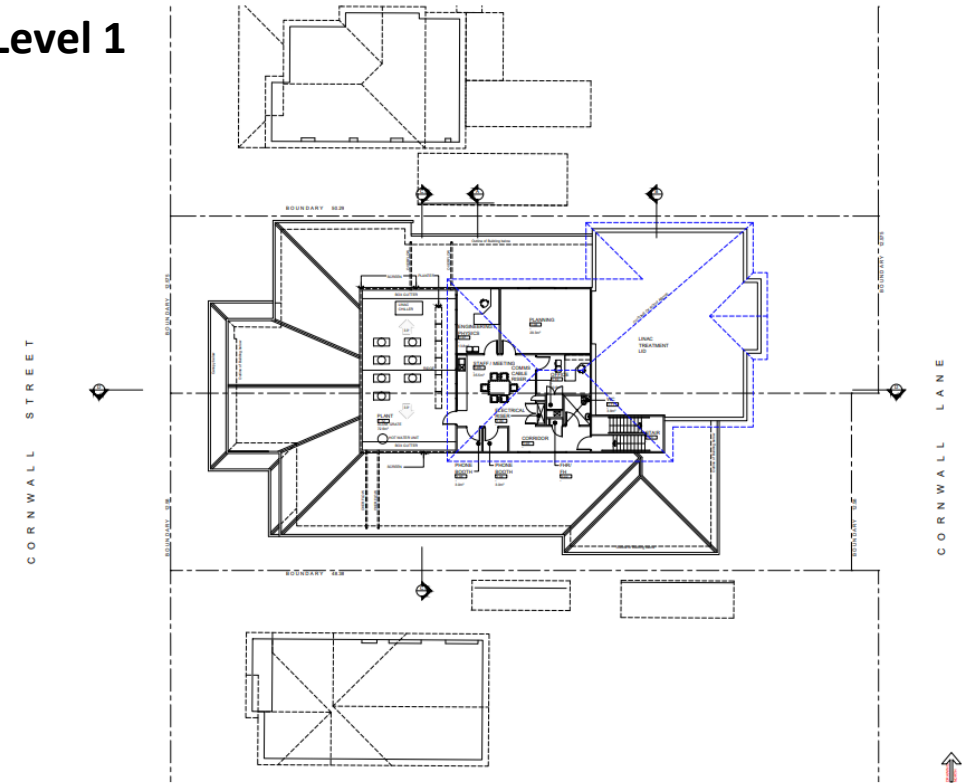
Cancer Care
Associates

Plan Overview

Ground Floor



Level 1



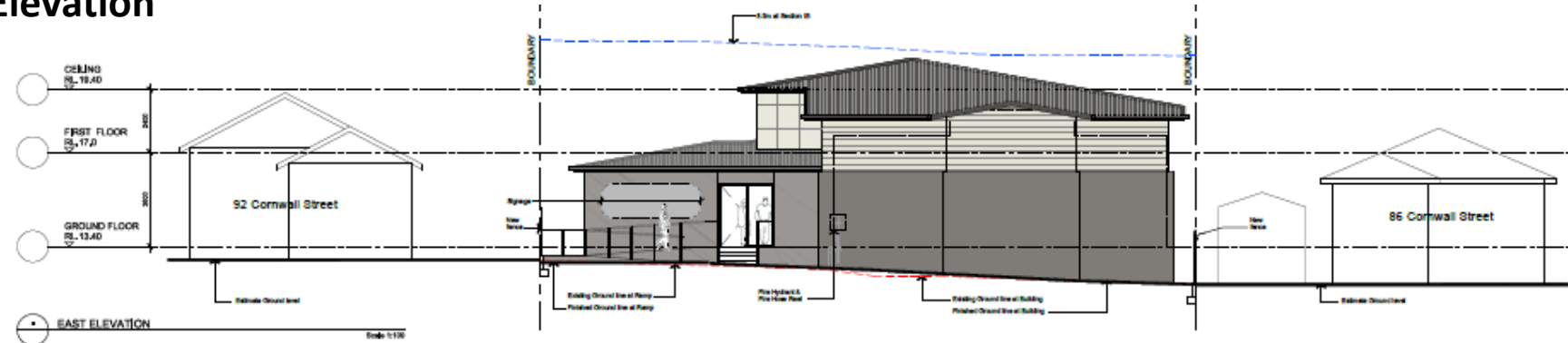
Cancer Care
Associates

Site Elevations

North Elevation

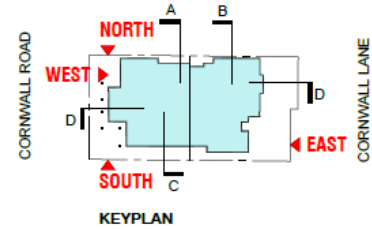
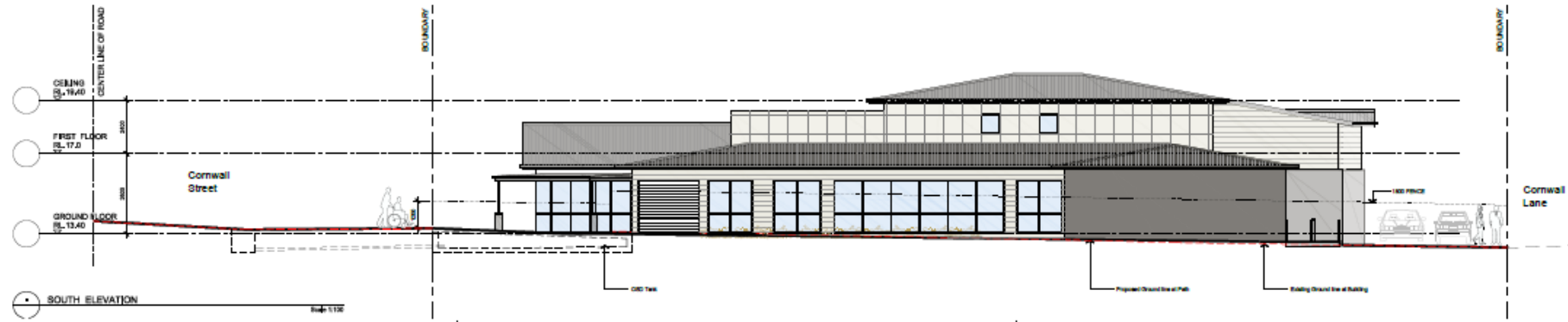


East Elevation



Site Elevations

South Elevation



West Elevation



Cancer Care
Associates

Service Utilisation

Based on expected utilisation for the region the maximum number of people on site at any one time will be 15 persons.

Radiation Oncology Patients are generally on site for 30 minute appointments.

Medical Oncology Patients are generally on site for 4 hourly appointments.

Patients can utilise a number of options to visit the site, including public transport, uber/taxi services, private vehicle use and DVA transport which offers a pick-up and drop-off service to patients.

It is anticipated the facility will service 2.5 patient movements per hour. The drop off and pick up zone will be utilised for patients and is expected to support 5 transfers per hour.



Reports, Pre-DA and Community Consultation

Reports and Plans Prepared

- Architectural
- Traffic
- Waste Management
- Acoustic
- BCA
- CIV (Cost Estimate)
- Civil & Stormwater
- DDA
- Fire
- Landscape
- SEE
- Land Survey
- Operational

Pre-DA

A Pre-Lodgement meeting was held with Mid-Coast Council on 26 September 2022.

Based on feedback, the Development Application package included/addressed;

- Stormwater
 - MUSIC model
 - Water Sensitive Design Initiatives
- Parking
 - Traffic study and Operational Assessment of parking needs, including loading/service vehicles
 - Reconfiguration of car park to allow for additional 2 x parking spaces
- Landscaping design and plan

Community Consultation

Community consultation and co-design activities are ongoing in preparation for design finalisation and service accreditation.

Issues for Further Consideration

- Status of internal and external referrals
 - Parking
 - Heritage (street trees)
- Clarifications required from the Applicant
- Status of public submissions
- Anticipated timeframe for finalisation of Council's assessment report

Thank You

